



Erie Art Museum

Quarterly

Winter 2023 Issue 4:4



A MESSAGE FROM THE DIRECTOR

Thank you for making our Masquerade at the Museum fundraising event a fantastic evening! Because of your shared commitment to making art accessible to everyone and fostering lifelong art learning, we are able to present an exciting range of exhibitions and education programs in the next quarter. Starting in 2024, interactive tours and activities will enhance access to the Museum with funding from the Art Bridges Foundation "Access for All" initiative. See page 4 to learn more.

As we plan the next steps for the Museum, we are expanding ways for you to experience the art in our galleries. In January 2024, we will open the long term exhibition, *Joseph Plavcan: The Making of an Artist*. It offers unique insight into this Erie artist's early work as a student of the Pennsylvania Academy of the Fine Arts including works borrowed from local art historians and collectors, highlighting the development of his style. We also present works by his teachers, students and contemporaries in order to tell the stories of the people and culture that shaped him as an artist. See page 11.

In celebration of this new exhibition, we're hosting another Up Close With the Collection event, offering the opportunity for our community to experience behind the scenes tours of the collection and mingle with the local art historians and collectors who have lent us pieces for the exhibit. More information, and where to buy tickets, can be found on page 3.

We love to explore and pass along the stories and connections between artists, art objects, and their shared history with you. Three of the exhibitions, *Las Calles de Oaxaca*, *Entre Plantas y Mujeres*, and *Revolución Chicha*, showcase Latino artists and their experiences. To learn more about the development of these exhibitions, and join *In Conversation* with the curators, see p. 13. For the Winter session, there are new classes and short weekend workshops that offer creative, relaxing experiences. We also invite you to drop in for our new monthly Lunch and Learn series, starting in January.



We are happy to announce Mabel Howard has joined the EAM staff as our new Membership Manager. She will be focusing on communication with membership and the community. Mabel brings a wealth of experience to the Museum. In addition to being the Executive Director of Bethany Outreach Center, she is the proprietor of Cafe 7-10, and curator for HICAAE, Historical Institute of Culture & the African American Experience. She also curates and produces Express Yourself On The Mic with Miss Mabeline and the Poetry X-Change.

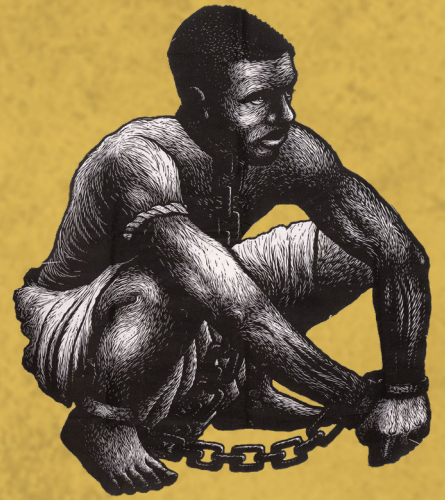
With all of the new programming and exhibitions we've been adding over the last year, there's a wide variety of ways to expand your creativity at the Museum!

A handwritten signature in black ink that reads "Laura Domencic".

Laura Domencic, Executive Director

NOW ON VIEW:

LAS CALLES DE OAXACA



The work showcased in *Las Calles de Oaxaca* was not created with perfection in mind. It was made with simple, ephemeral material in order to get a message out to the masses quickly and with little expense, a message that is powerful and without pretense. *Las Calles de Oaxaca* is not an exhibition about a movement, but rather an exhibition of a movement – one born from a need to preserve heritage and to honor the land as much as it honors its people.

UPCOMING EVENTS AT A GLANCE

December/January/February

RECEPTIONS, TALKS, LIVE MUSIC

UP CLOSE WITH THE COLLECTION

January 27th, 6 - 8 pm: In celebration of our new exhibition, *Joseph Plavcan: The Making of an Artist*, experience behind the scenes tours of the collection and mingle with the local art historians and collectors who have lent us works for the exhibit. Heavy hors d'oeuvres and cocktails included. \$50/person. Register today at erieartmuseum.org/up-close.

CURATION & COLLABORATION

January 6th, 7 pm: Lesley University Zoom panel discussion with Andrew Mroczek, Director of Exhibitions, Lesley University, Laura Domencic, Executive Director, Erie Art Museum, and Amor Diaz Campos, co-founder, Rios Intermitentes Biennale, Matanzas, Cuba. Mroczek curated *Las Calles de Oaxaca*, currently on exhibit at the EAM. The panel will share their collaborative processes in creating exhibitions.

IN CONVERSATION

February 3rd, 1 pm: Join us *In Conversation*, a virtual chat on Zoom with Guest Curators Ana Balaczar and Andrew Mroczek along with EAM Executive Director, Laura Domencic. The trio will share their connections and experiences in developing the exhibitions currently on view at the Museum, *Entre Plantas y Mujeres*, *Las Calles de Oaxaca*, and *Revolución Chicha*. Learn more about the connections between these three exhibitions on [page 13](#).

LUNCH & LEARN LECTURE SERIES

Wednesdays, January 17th through May 15th: *New for 2024!* Join us on the third Wednesday of each month for special presentations in our Holstein Gallery. Our first event will focus on photographing artwork & products. Mark your calendars and bring your lunch. No registration required. *Included with Museum admission, free for members.*



ART AFTER DARK



December 7th, January 4th, February 1st: Our popular Art After Dark series has returned for another season! Plan to join us on the first Thursday of each month, through May, 2024, for live entertainment, snacks, and an opportunity to visit our galleries. Watch our newsletter and social media posts for complete information. Art After Dark runs from **5 - 8 pm** and is *included with Museum admission, free for members. Sponsored by Erie Insurance.*

COMMUNITY EVENTS

FREE ADMISSION

FREE ADMISSION DAYS



National Fuel

UPMC HEALTH PLAN

December 1st, January 13th: The Museum will be offering these free admission days, courtesy of UPMC Health Plan and National Fuel, dedicated sponsors of events and activities at the EAM. Stop in to visit and experience the Museum, free of charge!

ACCESS FOR ALL



ACCESS FOR ALL

First Thursdays, 11 am - 3 pm, and third Saturdays, 10 am - 2 pm: The Erie Art Museum was one of 64 museums nationwide to receive "Access for All" funding from the Art Bridges Foundation. The initiative is to increase access to museums to ensure more people experience the creativity and joy that comes with seeing art. Beginning in January 2024, the Museum will feature additional free admission times with docents who will be available to answer questions, give tours, and guide visitors in make & take art activities.

CALLING ALL GANNON STUDENTS!



The Erie Art Museum and Gannon University have entered into the 2nd year of a partnership that allows **all Gannon students, faculty, and staff** (who have current IDs) to receive free admission to the Museum!

GALLERY NIGHT & KIDS NIGHT OUT

Friday, December 15th, 5 - 10 pm: Visit all of your favorite local galleries! More information, including a list of participants, can be found on pages 13 & 14 and at erieartmuseum.org/gallerynight.

KIDS NIGHT OUT: Let your children (ages 4-10) embark on a creative journey of their own at the expERIENCE Children's Museum while you enjoy Gallery Night at the EAM! *\$25 per child, 10% off for ECM Museum members. Register online at eriechildrensmuseum.org/kids-night-out.*

SECOND SUNDAYS

September 10th, October 8th, and November 12th, 2 - 4 pm: Different art making activities for families and loved ones, every Second Sunday of the month. *Pay what you wish. More information can be found at erieartmuseum.org/second-sundays.*

DRAWING AT THE MUSEUM

Every second Saturday of the month from 2 - 4 pm: Gain a deeper connection and appreciation of art in a calm, safe environment. Work independently, or ask for guidance from an instructor. All ages are welcome, children under 12 must be accompanied by an adult. *Included with Museum admission, free for members.*

FROM THE BOARD OF DIRECTORS



Matt Levy, Vice President, Board of Directors

As a professor of art history, I have spent my professional life in art museums and have had the good fortune to visit some of the best: the Metropolitan in New York, the Uffizi in Florence, the Louvre in Paris, and many more. However, it is without hyperbole when I say that the one I cherish most is in my own backyard: the Erie Art Museum.

Since moving to Erie with my family in 2013 to accept a position at Penn State Behrend, the EAM has enriched my life in so many ways—as a space for education, community, and service.

Every year, the Museum affords me the opportunity to demonstrate to my students the power of experiencing

art in person. I regularly assign a paper that requires them to closely analyze a work of art in the EAM galleries. For a generation of students accustomed to quickly swiping through images on screens, the task of spending 45-60 minutes gazing at a single, physical object can come as a shock. However, they regularly report that what they thought would be tedious proves to be revelatory, as the process of patient and careful observation results in a way of seeing they had never experienced before, one that sharpens both eye and mind.

For me personally, the Museum helped me find my people after moving to a new city. It's where I have met fellow educators, artists, and art lovers at exhibition openings and artist talks. It's where I met other parents of young children while participating in craft activities on Second Sundays. That feeling of community is never more palpable than on Gallery Nights, when it feels like all of Erie is at the Museum.

In short, the Erie Art Museum has helped make Erie feel like home to me, and for that I am forever grateful. That feeling of gratitude is why I leapt at the chance to serve on its Board of Directors in 2020. Serving the Museum has only deepened my connection to the organization, and my fellow Board members feel a similar bond. If you're reading this, you likely share those feelings, too, which is why I hope you will join me in including the Museum in your charitable giving plans.

Visit erieartmuseum.org/give to donate today!

MASQUERADE AT THE MUSEUM!

Thank you to everyone who joined us on October 28th for Masquerade at the Museum! and to our generous sponsors. From delicious food to captivating performances, FEED's multimedia experience and dancing the night away, we enjoyed hosting more than 300 guests at the Museum. We can't wait to do this again next year! Mark your calendars for **Saturday, October 26, 2024**. All proceeds benefit education, exhibits, and programming at the Museum.



Dancing to tunes by Erie DJ Company



Creative solar eclipse costumes



Seiche Dance Collective performance



Cast of Cabaret, Penn State Behrend



Masquerade Models with hair and makeup by HeadCases Salon; clothing by Dollhouse at Pointe Four

CLASSES

December/January/February

Register online for all classes & workshops at erieartmuseum.org/classes.
All classes listed are for adults, 18+, unless otherwise noted.

ADAPTIVE ART

This class, taught by Sara Fisher, encourages adults with disabilities to engage with different art mediums for interpretations such as movement, drawing, painting, and poetry.

Second Friday of each month: December 8th, January 12th, February 9th, 10 am - 12 pm.

18+. Free! Registration is required for participants & caregivers for each session. Sign up for one or many.

Supported by



ASIAN WATERCOLOR

Learn to paint using traditional Korean techniques with Master Watercolor artist, Esther Hong.

Thursday, January 11th through February 15th from 4 - 6 pm. Make-up class: Friday, February 24th. \$100 for members, \$115 for non-members.

EXPERIMENTAL PHOTOGRAPHY

Experimental Photography is a workshop series led by artist and photographer, Sarah MK Moody, inspired by Nicole Reinhold Martin's *Painterly Polaroids* exhibition. Sarah will instruct participants in various photo making processes. **Saturdays, January 20th through February 24th, 2 - 4 pm.** Participants may sign up for the entire series, or for each individual class. Individual Class: \$30 for members, \$40 for nonmembers. Full 6 weeks: \$160 for members, \$220 for non-members.

WINTER CROCHET CLASS

Embrace winter's cozy charm! Learn the art of crochet, creating warm winter accessories or a granny square blanket. **Thursdays, February 1st through 29th, 6 - 8 pm.** \$60 for members, \$75 for non-members.

STUDENT TOURS AT THE MUSEUM



Student tours at the Erie Art Museum build on youth's natural curiosity and Pennsylvania state education standards.

We welcome learners of all ages! Museum staff use a mixture of storytelling, games, interpretation, and art-making to offer students opportunities to view and interact with art, increasing observational and critical thinking skills.

Appointments are required for all school groups visiting the Museum.

To plan a school tour for your group, visit erieartmuseum.org/tour-request.

WORKSHOPS

BEADWORKING WITH SENECA NATION ARTISTS

Choose one of two dynamic workshops on **December 3rd from 1 - 4 pm:**



Discover the rich cultural heritage of the Haudenosaunee (Iroquois/Six Nations) by crafting beaded velvet pin cushions in honor of the strawberry with Penelope Minner. Haudenosaunee culture celebrates the strawberry as a gift from the Creator, symbolizing health, blessings, and thanksgiving.

\$50 for members, \$65 for non-members.



Join us for a captivating beading experience with Samantha Jacobs from the Cattaraugus First Nation. This is an opportunity to create a stunning Flat Spiral Weave Bracelet of your own. *\$50 for members, \$65 for non-members.*

Sign up for either workshop at erieartmuseum.org/beadworking.

THE ART OF SELF-CARE: SUNDAYS

Ready to embark on a transformative artistic journey? Minette Hand invites you to join her in a 4-week virtual studio experience designed to foster self-discovery, personal growth, and healing.

Sundays, November 26 - December 24th. 4:00 - 5:30 pm. *Free for members, \$15 for non-members.*

DOLL-MAKING WORKSHOP

Discover the beauty of imperfection in this unique workshop with artist and educator, Becky Coppock. In this creative and hands-on session, you'll learn to craft your own dolls while embracing the charm of imperfections! **Saturday, January 27th, 1 - 4 pm.** *\$35 members, \$50 non-members.*

TEAM BUILDING WORKSHOPS FOR BUSINESSES & ORGANIZATIONS

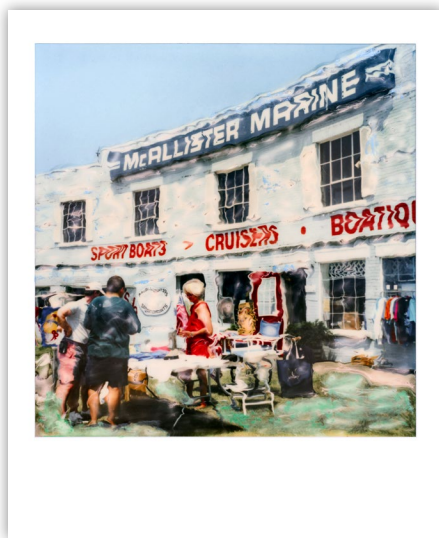
Empower your organization's growth with tailored interactive workshops at the Museum. Each unique session blends art-themed team building, communication strategies, stress relief, and self-care. Spark creativity and enhance workplace morale. Interested? Visit erieartmuseum.org/tour-request and tell us a bit about your goals!

CURRENT EXHIBITIONS

December, January, February



Mayo Carrillo, *Malos Olores (Bad Odors)*,
linocut and watercolor on paper, 2022.
Las Calles de Oaxaca.



Nicole Reinhold Martin, *Mccalister's Marine*,
hand-altered Polaroid, 2023. *Painterly Polaroids.*



NPAA BIENNIAL

On view through March 17th, 2024

The Northwestern Pennsylvania Artists Association (NPAA) is proud to present their 8th juried biennial exhibition at the Museum. The NPAA is a nonprofit 501(c)(3) organization for professional artists, whose mission is to create opportunities for established, emerging and student artists through exhibitions, education, and scholarships. This upcoming group exhibition will be the third biennial to be held in the Museum's historic Customs House.

Juror Madeline Gent is the Executive Director at the Associated Artists of Pittsburgh, a membership organization that exhibits, promotes, and supports the work of visual artists who call Pittsburgh and the surrounding region home.

PAINTERLY POLAROIDS

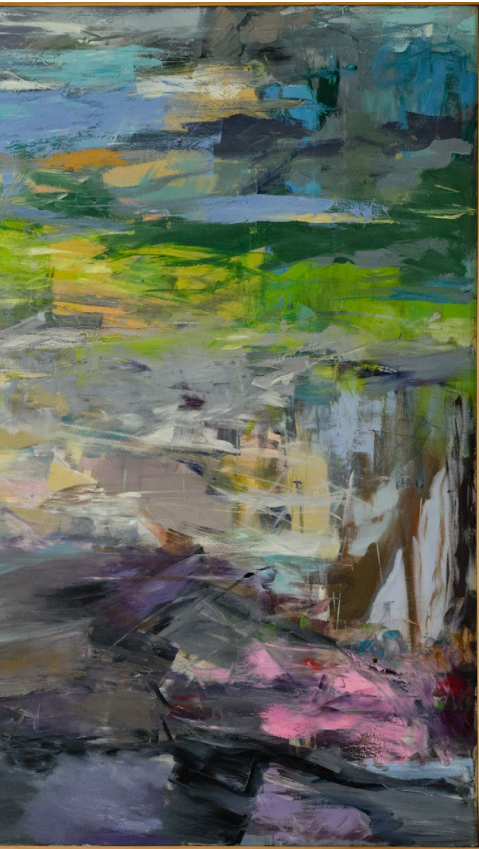
On view through August of 2024

This series of surreal photographs from artist Nicole Reinhold Martin was created by moving the pliable Polaroid emulsion with a stylus. It also highlights the Museum's efforts to preserve and digitize the original art objects in the permanent collection. In collaboration with the 1020 Collective.

SELECTIONS FROM A CENTURY: SPRING SHOW ACQUISITIONS 1924-2023

On view through September of 2024

In celebration of the *Spring Show's* 100th year, *Selections from a Century* features art that was acquired from the Spring Show's past, celebrating the history and culture generated by this storied, regional event.



Rachael Burke, *A Landscape Event*, oil on canvas, 2023. NPAA Biennial.

ENTRE PLANTAS Y MUJERES

On view through May 12th, 2024

For this second display of the *Connecting with the Collection* series, the Museum invited Peruvian artist Ana Balcazar to explore the collection of over 8,000 objects and create work in response. During the course of the past year, she studied the works and winnowed her selection to 33 pieces from the permanent collection. After meeting with artists whose work is in the collection and with past and present Museum staff, Ana finalized her selection and created works while in residence at the Museum from late April through July 2023. Sponsored in part by Gannon University. See page 3 for upcoming curators' talks.

REVOLUCIÓN CHICHA

On view through February 18th, 2024

Revolución Chicha features works by Peruvian artists and art collectives including Elliot Tupac, Amapolay, Familia Gutierrez, Nación Chicha, Moises Sants and Monkey. Born from the working class, "chicha" has become synonymous with Peru's indigenous culture and associated with the "lower classes." Beginning in the late 1960s, an influx of migrants brought their music to the main capital, Lima. The cultural fusion, known as chicha music, exploded onto Peru's radio waves as the chicha concert posters filled the streets. Within the last decade, this style of art has resurfaced as means for artistic activism and protest. These prints complement the exhibit *Entre Plantas y Mujeres* by Ana Balcazar, a Peruvian artist whose work is influenced by chicha aesthetics. See page 3 for upcoming curators' talks.



Andrew Dominick Sanders, *Nancy in White*, oil on canvas, 1973. *Entre Plantas y Mujeres*. EAM Permanent Collection.

LAS CALLES DE OAXACA

On view through February 18th, 2024

Las Calles de Oaxaca (the Streets of Oaxaca) features a selection of works by emerging and established artists of Oaxaca, México. Curated by Andrew Mroczek, Director of Exhibitions at the Lesley University College of Art and Design in Cambridge, MA, the exhibit is punctuated by large-scale linocut prints from an underground artist collective, known as Subterráneos, whose work is often mural-sized, profoundly political, and seen wheat-pasted on buildings throughout Oaxaca's historic center.

Working collaboratively with Master Printmaker Mario Guzman, the collective is primarily comprised of young Oaxacan artists who are interested in creating meaningful work that directly impacts the lives of native Mexicans. The exhibit underscores the importance of remembering the often-tragic historical events that have shaped cultures, while also embracing the possibility that artists' voices are catalysts for change. See page 3 for upcoming curators' talks.

COMING UP

101ST ANNUAL SPRING SHOW

On view March 15th through August 9th, 2024

We're excited to open submissions to the 101st Annual *Nicole & Harry Martin Spring Show*. Registration begins on **December 1st, 2023**, and runs through January 19th, 2024. Opening on March 15th in our main gallery space, the Spring Show is a juried art exhibition open to any and all artists living, working, or studying within 250 miles of the City of Erie, Pennsylvania.

Submissions can be made through the Museum website at erieartmuseum.org/spring-show. Museum staff will be available for an in-person workshop, prior to January 19th, for those who need assistance photographing and submitting their works. More details on this workshop will be announced at a later date.

A number of distinctions will be named, with award winners having the opportunity to give a presentation at the EAM. The Erie Art Museum, in partnership with the Penn West University at Edinboro Art Department, select a juror. Associated programming for the Spring Show will include art talks, workshops, and critiques. Generous support for this exhibition is provided by Nicole and Harry Martin.

JOSEPH PLAVCAN: THE MAKING OF AN ARTIST

Opening January 26th, 2024 through 2026

This exhibition will offer unique insight into this iconic Erie artist and teacher. It will include his early work as a student of the Pennsylvania Academy of the Fine Arts including works borrowed from local art historians and collectors, highlighting the development of his style. During the course of this multi year exhibition, a selection of works will be on view for shorter time frames. This will highlight the development of styles in Plavcan's work next to his teachers, students and contemporaries to tell the stories of the people and culture that shaped him as an artist.





100th Annual Nicole & Harry Martin Spring Show, 2023.



Joseph Plavcan, *The Blue Pitcher*, oil on canvas, 1930.
EAM Permanent Collection.



Joseph Plavcan, *Academy Stadium*, oil on canvas.
EAM Permanent Collection.

IN CONVERSATION: INSIDE AN EXHIBITION



Ana Balcazar, *Pétalos rojas (Red petals)*, oil and acrylic on canvas, 2023. *Entre Plantas y Mujeres*.



Moisés Sants, *Sonríe es Gratis (Smile it's Free)*, Pen & acrylic on paper, 2019. *Revolución Chicha*.

Many details go into each exhibition to present the artist's vision and voice. Along with the visual elements: selecting the art, deciding on arrangement in the gallery space, and lighting, the written elements, the labels and text panels, are there to provide insight into the artist's materials, thought process, background and influences. Once the show opens, the creative cycle of an exhibition doesn't end. It begins a new phase in dialogue with the community.

In our continuing conversation with Ana Balcazar and her exhibition, *Entre Plantas y Mujeres*, we discovered a serendipity with another guest curator, Andrew Mroczek. He presented a smaller version of the exhibit *Las Calles de Oaxaca* in Boston last fall, during the time Ana was beginning to delve into the EAM permanent collection. Though the exhibits developed separately they converge - Ana's work is heavily influenced by chicha art and music; Andrew regularly travels to Mexico and Peru and has a collection of chicha art. It was a wonderful chance to highlight the visual culture of Ana's Peruvian homeland, and resulted in the exhibition *Revolución Chicha*. A deeper connection was found when Amapolay, a good friend and colleague of Ana's, was among artists' work on loan to the Museum from Andrew's collection. Amapolay's work about Peruvian women reclaiming their rights is presented in the Museum next to work in *Entre Plantas y Mujeres*, *Between Plants and Women*, showing a range of women's realities.

Join the trio on **February 3rd, 1 pm** via Zoom while they further discuss these three exhibitions. Check our website for more details.

PAEA

The Museum hosted the Pennsylvania Art Education Association reception on October 6th. During this annual weekend conference, art educators across the state gather to promote art education through professional development, leadership, and service. Executive Director Laura Domencic co-presented with keynote speaker, Tina Williams Brewer, to share Brewer's work as an artist and teaching artist in Pittsburgh public schools. Education Manager Lakshmi Cruz Galan also presented sessions during the conference, sharing how to use the Museum as an educational resource and cultivating interconnected learning experiences.



Mary Elizabeth Meier, PAEA conference co-chair, Laura Domencic, and Tina Williams Brewer.



Lakshmi Cruz Galan with Tina Williams Brewer at Tina's workshop.

**GALLERY NIGHT:
DECEMBER 15TH**

+ **KIDS NIGHT OUT AT ECM**
SEE PAGE 4!

WHITETHORN GAMES PURRISTA CAT CAFE ARTIFACTS ON 10TH
KADA GALLERY & FRAME SHOP ERIE COUNTY PUBLIC LIBRARY
CITY SUPPLY ERIE DOWNTOWN PARTNERSHIP
AND CHESTNUT SCHUSTER GALLERY/GANNON UNIVERSITY

STAFF SPOTLIGHT: KELSIE FERRY, ADMINISTRATIVE AND EVENT COORDINATOR



Tell us a bit about your background.

I was born and raised in Erie, PA and I have lived here all of my life. I graduated from Mercyhurst University with a major in Hospitality Management, and a career concentration in Event Management in 2018. Before starting at the Erie Art Museum, I worked at Peek'n Peak Resort in Clymer, New York for about 5 years.

What does a typical Museum work day look like for you?

I am very fortunate to have a flexible, hybrid, part-time schedule with the Erie Art Museum, so every day is a little different - which I love! When I am in the office, you can usually find me at my desk working on proposals, working out event details, touring rental clients, or making rental agreements.

What's your favorite event that takes place at the Museum?

My favorite event that the Erie Art Museum puts on are our quarterly Gallery Nights. I enjoy seeing the Museum filled with so much life while guests explore our wonderful exhibits. I also love weddings at the Museum. There is just something so special about welcoming a couple into the Museum to host one of the most special days of their lives.

COLLECTIONS CORNER

Portrait of Mrs. Peter G. Pulakos, Joseph Plavcan, oil on Canvas, 1945.

Gift of Elaine Pulakos Adams, George P. Pulakos and Milton Pulakos.

EAM Permanent Collection.

Erie artist Joseph Plavcan's portrait of Carolyn Pulakos was selected by artist and guest curator Ana Balcazar for her exhibition, titled *Entre Plantas y Mujeres*, and is currently on view in the Frenzel gallery. Painted in 1945, the portrait fits within Plavcan's mid century realist style, with a cool palette and thin, dry application of paint, leaving spots of bare natural canvas showing through. The sitter's expression seems equally cool, poised and self-possessed, with the piano in the background suggesting her love of music. Mrs. Carolyn Pulakos (1894–1982, born in Greece) was active with the Erie Philharmonic, the Woman's Club of Erie, and the Erie YMCA, as well as war relief efforts for Greece following World War II. Her husband Peter Pulakos founded the well-known Erie chocolate company, Pulakos.



Museum visitors will have the opportunity to dive deeper into Joseph Plavcan's stylistic development when our new Plavcan exhibit opens this coming January. Do you own a piece of art by Plavcan? The EAM has begun the process of cataloging and digitizing this Erie icon's complete works. If you have any information to add to our archive, or own a piece that could be added to our database, please contact us at info@erieartmuseum.org.

MUSEUM HOURS

Wednesdays: 11 am - 6 pm

Thursdays: 11 am - 6 pm

Fridays: 11 am - 6 pm

Saturdays: 10 am - 5 pm

Sundays: 1 pm - 6 pm

On the Cover:

Brad Lethaby, *April Thaw, Battles Farmhouse*, oil, 2023.

The Erie Art Museum receives general support from Pennsylvania Council on the Arts and the Erie County Gaming Revenue Authority.



Quarterly, a publication of the Erie Art Museum, 20 East 5th Street, Erie, PA 16507, is published four times a year.

**Interested in receiving a digital version of the Q?
Visit erieartmuseum.org.**



Erie Art Museum

20 East 5th Street • Erie PA 16507

erieartmuseum.org

Return Service Requested

Non Profit Org.
U.S. Postage
PAID
Erie, PA
Permit #44

We've enhanced our membership program!

When you purchase a yearly membership to the Erie Art Museum, you not only help support our work, but you also receive the following benefits:

- Discount on classes and workshops
- Quarterly Magazine subscription
- 10% discount in Museum Gift Shop
- 10% discount on private rentals of Museum space
- Free admission to Art After Dark and Lunch & Learn Lecture Series, as well as other special events, such as artist talks, and lectures
- Gallery Night Drink Card, valid for one complimentary beverage from the bar during Gallery Night at the Erie Art Museum

Visit erieartmuseum.org/membership to renew or purchase a membership today! Remember, memberships make great gifts too.